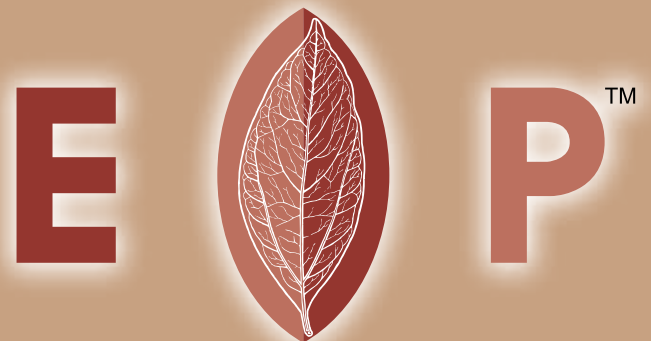




PRODUCTS CATALOGUE



earth friendly chemistry

www.epasia.net

COATINGS - CLEANERS - DEGREASERS - WATERPROOFING SYSTEMS

E P™ THE REVOLUTION

Eco-friendly technology water-based – easy to use – non toxic and non flammable our products meet the highest of international standards and are recognised globally as ‘superior’ in environmental technology.

E P™ began its journey in Asia during 2004 bringing the very best of Australian technology to Malaysia.

Since then the E P™ brand has moved from strength to strength covering a wide range of markets and applications from commercial grade waterproofing to cleaning palm oil mills and even off shore oil & gas operations.

- ✓ Easy to use
- ✓ Eco-friendly
- ✓ Non toxic
- ✓ No mixing
- ✓ Non flammable
- ✓ Non hazardous
- ✓ No special equipment

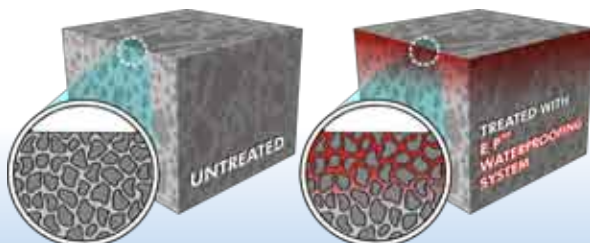
E P™ eco-friendly products are leading industries and consumers towards an environmental future that can only benefit all of us.

Waterproofing

EP™ Waterproofing System

Your partner in construction waterproofing

This product penetrates deep into concrete, creating a denser, hard and completely waterproof surface that cannot be damaged, torn, pierced, broken or ripped. EP™ Waterproofing System is NOT a membrane, requires only one



EP™ works by penetrating the concrete's surface by capillary action and coats each particle with Polyester Polymer Chemistry. On the left the concrete aggregate and other particles are uncoated allowing moisture and water through. On right the polymer chemical reaction solidifies all the components into one strong mass. Also stops moisture rising up through the concrete.



application. Can be used on all concrete and masonry units, old or new construction - bricks, concrete, pavers, cobblestones, tile grouts, repair materials, shot-crete, terracotta and natural stone. Dries completely transparent, leaving a natural finish to all masonry, with no shine, non slippery and does not have to be re-applied every few years like surface coatings. No floor hardeners or curing agents are needed once treated with this product.

Application: Clean surface - apply EP™ Waterproofing System @ 5-7 sq.mtr per 1 Litre - wait to dry 25-45 minutes. Use only water to clean all tools and equipment.

EP™ Waterproof Supreme

No mixing - apply using brush, broom, spray-back-pack, roller. Use only water to clean all tools and equipment.

Utilizing advanced urethane technology, combined with Polymer Chemistry, a penetrating polymer system that dries quickly. Specially developed to provide a tough stain resistant surface, leaving a stain free and chemical resistant surface on all concrete and masonry surfaces. Excellent for areas such as gas stations and public areas i.e. food stalls.



Application: Clean surface to be treated with broom or brush, remove any staining with any of the EP™ cleaning range - wait to dry - apply EP™ Waterproof Supreme to surface.

EP™ Block Seal

Utilising advanced acrylic technology, combined with Polyester Polymer. This formula outperforms all other aliphatic solutions currently in the market place. This latest product was specially developed for concrete blocks used in retaining wall construction. Non toxic, non hazardous, non flammable, high chemical resistance, high surface tension, easier stain removal properties and prevents fretting mortar. With only two applications, EP™ Block Seal penetrates & protects from within. Compatible with all conventional sealants, adhesives & paint.



Application: Apply E P™ Block Seal after any repairs - spray area @ 1 Litre per 4-5 square metres, apply second coat within 30 to 45 mins - Critical that any missing mortar and cracks are repaired prior to sealing. We recommend EP™ Bondex used to repair mortar.

EP™ Ultra Seal

No mixing - apply using brush, broom, spray-back-pack or roller. Use only water to clean all tools and equipment.

A unique formulation for more porous materials such as limestone and sandstone. This product creates an extremely hard wearing polymer/acrylic surface with a slight/mild gloss finish. Excellent for porous surfaces such as screeding, plastering or rough concrete.



Application: Clean surface with any of the EP™ cleaning range - wait to dry - apply EP™ Ultra Seal to surface - very porous materials may require multiple applications.



TRAINED WATERPROOFING SPECIALISTS
Nationwide

The EP™ range of waterproofing products have been successfully tested and accredited by the world's leading authorities from;
ASTM – American Society for the Testing of Materials
BSI – British Standards
SIRIM QAS – Malaysian standards
Standards Australia & International testing by independent laboratories.

Cleaners

EP™ Eco-Kleen

No mixing - apply using broom, brush, mop, cloth/wipe, hand-spray/back-pack.

EP™ Eco-Kleen has over 1000 uses for all general purpose cleaning for any surface from bricks, blocks, tiles, concrete and masonry surfaces, carpets, air-con filters, bathrooms, stainless steel, porcelain, tables, rubber clothing - all surfaces where cleaning is needed. EP™ Eco-Kleen leaves no residue, kills bacteria by 99.9%



Application: Dilute to job requirements - normal rate is 20:1 - 20 being water. EP™ Eco-Kleen can be diluted to any amount.

EP™ Efflorescence Remover

No mixing - apply using broom, brush, back-pack. Use only water to clean all tools and equipment.

EP™ Efflorescence Remover easily removes that "white-fluffy powder", caused by impurities such as salt and excess lime from bricks, blocks, tile, walls, floors, concrete and masonry surfaces. EP™ Efflorescence Remover is fast, economical, effective, non toxic, biodegradable and non carcinogenic.



Application: Wash/brush away all dirt, leaves and grime from surface - wait to semi-dry so surface is not saturated - apply EP™ Efflorescence Remover 5-7 sq.mtr. per 1 litre - scrub over surface - wait 5-8 minutes and rinse.

EP™ Marine Wash

No mixing - apply using broom/mop, brush, cloth, back-pack. Use only water to clean all tools and equipment.

Designed for the cleaning requirements of the marine industry, EP™ Marine Wash is a heavy duty degreaser that provides excellent cleaning, degreasing and anti-bacterial power in an economical solution. Simple to use, high yield dilution ratio (15:1 – 50:1), leaves no residue and can be used on all surfaces. Can also be mixed with sea water.



Application: Scrape off extremely heavy grease buildup - dilute to job requirement - spray on let stand for 1 to 3 minutes, agitate severe spots - rinse thoroughly with water - repeat as needed.

EP™ Rig-Kleen L-F (Low Foam) / XHD (Extra Heavy Duty)

No mixing - apply using broom, brush, back-pack. Use only water to clean all tools and equipment.

Specifically designed for off shore oil & gas operations, EP™ Rig-Kleen is eco-friendly, non toxic, non flammable and readily bio-degradable. It cleans all surfaces and equipment, leaves no residue or slippery surfaces - low foam solution. Can be diluted (H2O) 5:1 or drawn directly into high pressure lines. Can also be mixed with sea water.



Application: Scrape off extremely heavy grease buildup - use full strength or dilute to job requirement - spray on let stand for 1 to 3 minutes, agitate severe spots - rinse thoroughly - repeat as needed until area is clean.

EP™ Rust Stain Remover

No mixing - apply using broom, brush, back-pack. Use only water to clean all tools and equipment.

This unique formulation removes heavy rust staining and dirty rust marks from all masonry, concrete, brick and colour-bond steel. When used with a high pressure water-jet it is unsurpassed in cleaning abilities.

Tip: High pressure water is recommended for larger areas.



Application: Wash/brush away all dirt, leaves and grime from surface - wait to semi-dry so surface is not saturated - apply EP™ Rust Stain Remover 5-7 sq.mtr. per 1 litre - scrub, wait 5-8 minutes and rinse.

EP™ Brick & Tile Cleaner

No mixing - apply using broom, brush, back-pack. Use only water to clean all tools and equipment.

Simple application of this product removes all staining from bricks and tile - walls and floors - excellent for post-construction cleaning and on-going maintenance.

Tip: High pressure water is recommended for larger areas.



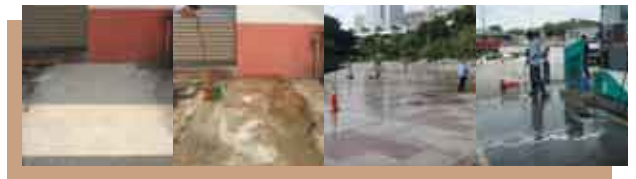
Application: Wash/Brush away all dirt, leaves and grime from surface - wait till semi-dry so surface is not saturated - apply EP™ Brick & Tile Cleaner 5-7 sq.mtr. per 1 litre - scrub, wait 5-8 minutes and rinse.

EP™ Concrete Cleaner

No mixing - apply using broom, brush, spray/back-pack. Use only water to clean all tools & equipment.

An easy to apply liquid cleaner that removes all oil, grease, fats and general staining from concrete, restores all concrete, bricks and masonry back to its original condition removing years of in-ground stains.

Tip: High pressure water is recommended for larger areas.



Application: Wash/brush away all dirt, leaves and grime from surface - wait till semi-dry so surface is not saturated - apply EP™ Concrete Cleaner 5-7 sq.mtr. per 1 litre - scrub, wait 5-8 minutes and rinse.

EP™ Truck, Car & Boat Wash

No mixing - apply using broom, brush, spray/back-pack, mop, cloth or wipe. Use only water to clean all tools and equipment.

EP™ Truck, Car & Boat Wash has many uses for the owner or contractor for all general maintenance and cleaning of materials, equipment, parts, engines, bulkheads, oil/grease containers for all automotive, marine and transport industries.



Application: Dilute to job requirements - normal rate is 20:1 - 20 being water. Can be siphoned through a high pressure water unit.

EP™ Clean Hands Anti-Bacterial

EP™ Clean Hands *Anti-Bacterial* is a mild liquid cleanser specially formulated using only the highest of quality ingredients. The gentle lather cleans away all hard to remove grease, oils, fats, carbon and difficult staining from your hands leaving them feeling clean and soft.

- Mild hand detergent.
- Good for everyday use.



- Cleans all staining, grease, oil and grime.
- Over 20 different fragrances personalized by you.
- Easy open top containers or pump application.



Tested and accredited by the world's leading organisations



SAFE FOR THE ENVIRONMENT?

Our products have been extensively tested from the base raw material to the finished end product; all are recognised as compatible and accepted to environmental guidelines from organisations and global standards authorities.

E P™ eco-friendly products are registered as environmentally safe by the world's leading authorities such as; Greenseal USA, Blue Angel Germany, Good Environmental Choice Australia & New Zealand, Japan, Canada, Czech Republic, Korea, China, Taiwan & Thailand plus membership with Global Environmental Declaration Network.

All testing is performed to an accredited ISO standard. Not only are our products internationally tested, but are also manufactured using rain water collected from our factory roof, E P™ initiated the Giveback™ scheme where all used containers are either collected by E P™ or bought back by us to be reused for future use.

Aside from our environmental achievements with our E P™ range our sustainability program is a standard policy with a total recycling system from the office to factory floor.

Treatment/Ad-mix

EP™ Rust Converter

No mixing required. Apply using brush or roller. Use only water to clean all tools and equipment.

Easily converts iron oxide (rust) into iron phosphate with this easy to use rust converter, only one application is needed. Once dry, this product leaves a Polymer film behind as a protective layer. EP™ Rust Converter is also excellent as a primer or coating to give a 'profile' to new surfaces or materials.



Application: Wire brush rusted steel surface to remove all flakes and loose particles - remove any oils or grease with EP™ Eco-Kleen, wait to dry - apply EP™ Rust Converter and leave to dry 5-15 minutes..

EP™ Dust Suppressor

Specially designed to save water consumption for dust suppressing in the mining industry, this product is highly economical, eco-friendly, non flammable & non toxic. Diluted with water or sea water, this mixture binds and hardens all surface dust and particles, whilst greatly improving the air-quality levels and reducing the amount of water consumed in daily operations.



Application: Dilute EP™ Dust Suppressor with water 5:1 - mix and spray to area where dust is present - secondary applications 15:1.

EP™ Bondex

Apply using brush, broom/roller. Use only water to clean all tools and equipment.

A high-bond additive with a stronger, longer lasting acrylic composition for all cementitious repair materials. Typically used for all concrete and masonry repairs. Dries quickly and hard setting with no shrinkage. Use for repairing holes, cracks and resurfacing old concrete to give a smooth fresh surface.



Application: Brush product onto area to 'prime' - mix product with water - add to repair material - patch surface and wait to dry - apply EP™ Waterproofing System to waterproof the repairs.

EP™ Wood Sealer

A unique formulation manufactured for the effective treatment and preservation of all wood surfaces and timbers against weathering, cupping, twisting and also aids in anti-mould and algae growth protection.

EP™ Wood Sealer is the most effective wood sealer in the market for waterproofing, fire and smoke treatment, deterring bugs and rot in all types of wood.



Application: Clean all surfaces from grime, oils and old paint - apply product to dry surface 7-9 sq.mtr per 1 litre - leave to dry 1-3 hours before paintings.



Malaysia's **No. 1** manufacturer
of eco-friendly products for construction and maintenance industries



EP Borneo Sdn Bhd

Head Office :
No.10, Jalan PJU 3/40, Sunway
Damansara 47810 Petaling Jaya
Selangor, Malaysia
Tel: +603 7885 0150
Fax: +603 7885 0155

e-Mail : sales@epasia.net

Sabah Branch :
Lot 71-72, Wong Kwok Industrial Centre,
Off Jalan Bundusan, Bundusan, Penampang,
89500 Kota Kinabalu, Sabah, Malaysia
Tel: +6088 726 714
Fax: +6088 727 714



www.epasia.net